

Maintenance Schedule for BLAZE 300 (48.7276)

Periodic maintenance of the heater is necessary to ensure proper performance and to prevent failures. Maintenance should be performed at periodic intervals shown below. Operating in dirty or dusty environments will require maintenance in shorter intervals.

Daily maintenance

- Inspect air inlet / air outlet, remove debris if any, secure ductwork if necessary
- Verify fuel tank is full
- Verify there are no visible fuel leaks
- Verify Exhaust Stack is properly installed and ducting is straight (no sharp bends)



Figure 1

Weekly maintenance

- Inspect fuel filter and replace if necessary (Figure 1). If fuel filter is full during operation, it is clogged and should be replaced. Normal operation should fill the filter approximately half or less.
- Disassemble burner head (see figures 4-6 below)
 - Remove top panel to wipe fan and all visible components. *Unit won't fire unless panel is reinstalled.*
 - Ensure Combustion Air settings are correct (Figure 2 and Figure 2-A)
 - Inspect and clean burner diffuser – clean all soot and debris by wiping out with a cloth or an abrasive pad. Photo eye, shown in figure 3, depends upon a clean combustion chamber to reflect light back which allows the unit to detect sufficient light for run mode.
 - Clean ignition electrodes and adjust settings to 3mm apart (Figure 7)
 - Make sure Photo eye is wiped clean (Figure 3)
- Inspect the fuel hose assembly and check for any leaks – tighten connections as needed

Figure 2

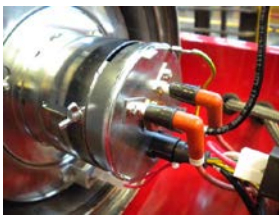


Figure 2-A

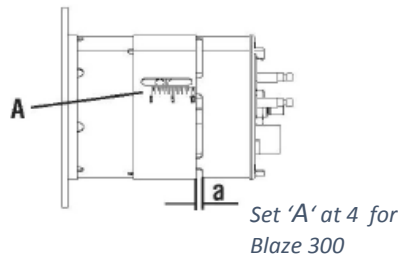
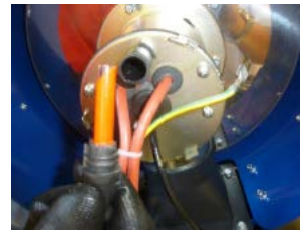


Figure 3



Monthly maintenance

- Disassemble burner head (see figures 4-6 below)
 - Inspect and replace nozzle if necessary
 - Check air combustion setting
- Inspect and clean the combustion chamber as instructed above
- Open electric board, inspect electrical components and check connections
- See Service Manual regarding Pump PSI (Blaze 300 @ 174 PSI) - Fuel Pressure Test Gauge item # 48.7265
- Test the burner when maintenance has been completed – *top cover must be installed in order to run/test*

Figure 4



Figure 5



Figure 6



Figure 7

